



ENHANCED PRIMARY CARE BENEFITS AND SERVICES

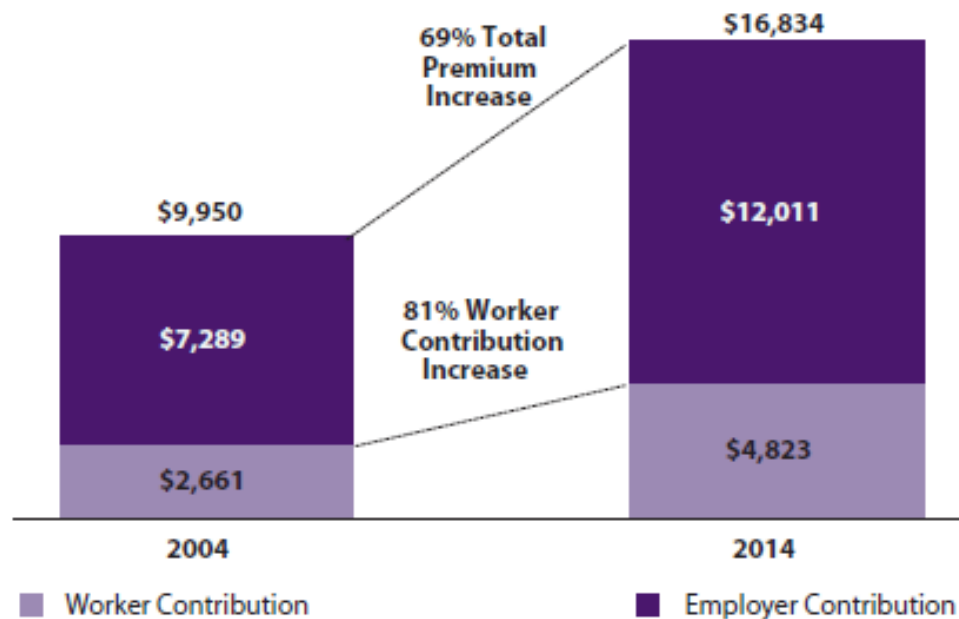
Quality care, close to home.



WHY IS THERE A NEED TO CHANGE?

EXHIBIT A

Average Annual Health Insurance Premiums and Worker Contributions for Family Coverage, 2004–2014



SOURCE: Kaiser/HRET Survey of Employer-Sponsored Health Benefits, 2004–2014.

WHY IS THERE A NEED TO CHANGE?

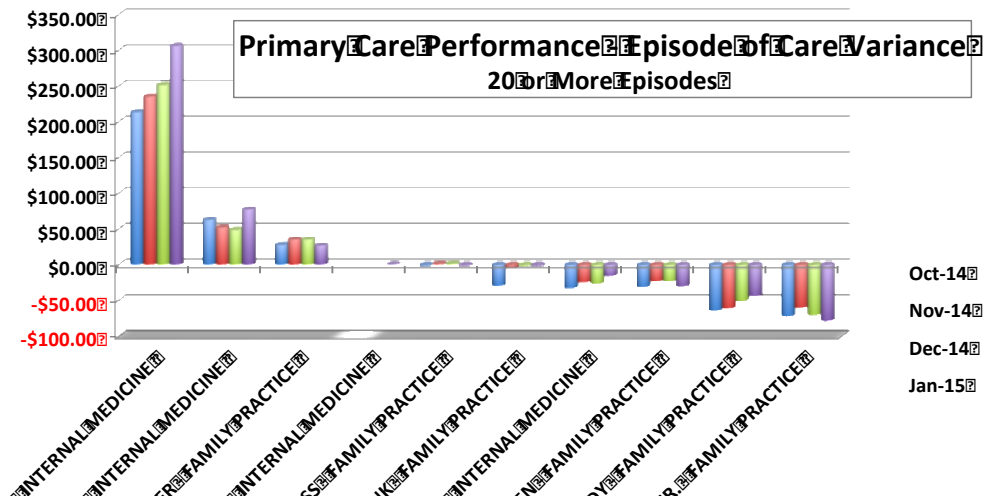
Primary Care is in the Unique Position to:

- Better coordinate care
- Become proactive, rather than reactive
- Focus on the whole patient
- Quarterback a larger and more robust team
- Close gaps in care

ENHANCING PRIMARY CARE BENEFITS

“Featured & Favored” Community of Primary Care

- Primary Care Performance Data Study
 - Process of Care Performance
 - Volume and Frequency of Service Efficiency
 - Effectiveness / Outcomes



Oct-14
Nov-14
Dec-14
Jan-15



**EMPLOYER ADVANTAGE
HEALTH CARE SOLUTIONS**

EAHCS.COM

ENHANCING PRIMARY CARE BENEFITS

Providing Primary Care Benefit Enhanced Coverage for **80/20 Health Plan Participants**

- Preventative Care
 - Practice Level Health Status Improvement / Outreach

- Sick / Acute Care
 - Common injury and illness treatment

- Chronic Care
 - “Disease Management” Program

WHAT'S COVERED? 80/20 PLAN PARTICIPANTS

- Annual exam
- Acute visits
- Blood Draws
- Preventive Care
- Health Coaching
- Chronic Disease Management
- Specialist and Hospital Coordination
- Preventative/Specific Lab Tests
- Consultations and personalized coaching for weight loss, smoking cessation, and stress management
- Chronic disease management for hypertension, diabetes, hyperlipidemia, heart disease, asthma, arthritis, osteoporosis, and many other conditions with referrals out to specialist when necessary

ENHANCING PRIMARY CARE BENEFITS

Providing Primary Care Benefit Enhanced Coverage for **High Deductible Health Plan Participants**

- Preventative Care
 - Practice Level Health Status Improvement / Outreach
- Wellness
 - Annual Checkups
- Chronic Care
 - Disease Management

**IRS tax laws require any service(s) for those individuals enrolled in a qualified HDHP that falls outside of these service areas will be subjected to requirements to satisfy the plan deductible.

WHAT'S COVERED? HIGH DEDUCTIBLE PLAN

- Annual exam
- Blood Draws
- Preventive Care
- Health Coaching
- Chronic Disease Management
- Specialist and Hospital Coordination
- Preventative/Specific Lab Test
- Consultations and personalized coaching for weight loss, smoking cessation, and stress management
- Chronic disease management for hypertension, diabetes, hyperlipidemia, heart disease, asthma, arthritis, osteoporosis, and many other conditions with referrals out to specialist when necessary

Sick Care/Acute Visits excluded

ENHANCED PRIMARY CARE PATIENT EXPERIENCE

- Direct Primary Care Model
 - <http://www.emmisolutions.com/medical-home-english>
- Prepaid Care for Enrolled Patients
- Practice Provides Patient Outreach / Prompt Access
- Enhanced Clinical Record
 - Effective Documentation / Follow up for Preventive Care / Chronic Care / Sick Care
 - Team-Based Medicine

TEAM-BASED MEDICINE: INTRODUCING THE NURSE NAVIGATOR ROLE



Beth Albaugh, RN

- Nursing degree from Kent State University
- Spent 12 of her 16 years in nursing in home health
- Previously worked for Union Hospital Home Health
- Harrison County native resides on farm near Tappan Lake with husband, Collin and three daughters

TEAM-BASED MEDICINE: INTRODUCING THE NURSE NAVIGATOR ROLE



Ashley Grimm, RN

- Nursing degree from Kent State University
- Previously worked for Union Hospital Home Health Care and Aultman Hospital
- Claymont High School graduate
- Resides in Uhrichsville with husband, Derek and son.

TEAM-BASED MEDICINE: INTRODUCING THE NURSE NAVIGATOR ROLE



Dusty Harder, RN

- Nursing degree from Kent State University
- Previously worked for Union Hospital Home Health Care and critical care for Aultman and Mercy hospitals
- Native of Strasburg
- Enjoys the outdoors and spending time with his German Shepard, Napoleon



U+PS

UNION PHYSICIAN SERVICES

UNION PHYSICIAN SERVICES

Newcomerstown Union Physician Services



**Christopher Coulson,
D.O.**



**D. Jeffrey Burrier,
M.D.**



**Denise Miller,
D.O.**



**Teri Carpenter,
MSW, LISW-S**

Cross Street Family Medicine



Deepthi Singam, M.D.



John Burnham, M.D.

Alpine Family Medicine



Terri Shilling, D.O.

UNION PHYSICIAN SERVICES

UPS Central



Mahaveer Mukkamalla, M.D.



Casey Perkowski, M.D.



Spencer Pinion, M.D.



Jennifer Melegari, CNP

UPS Family Healthcare



Kristi Leindecker, M.D.

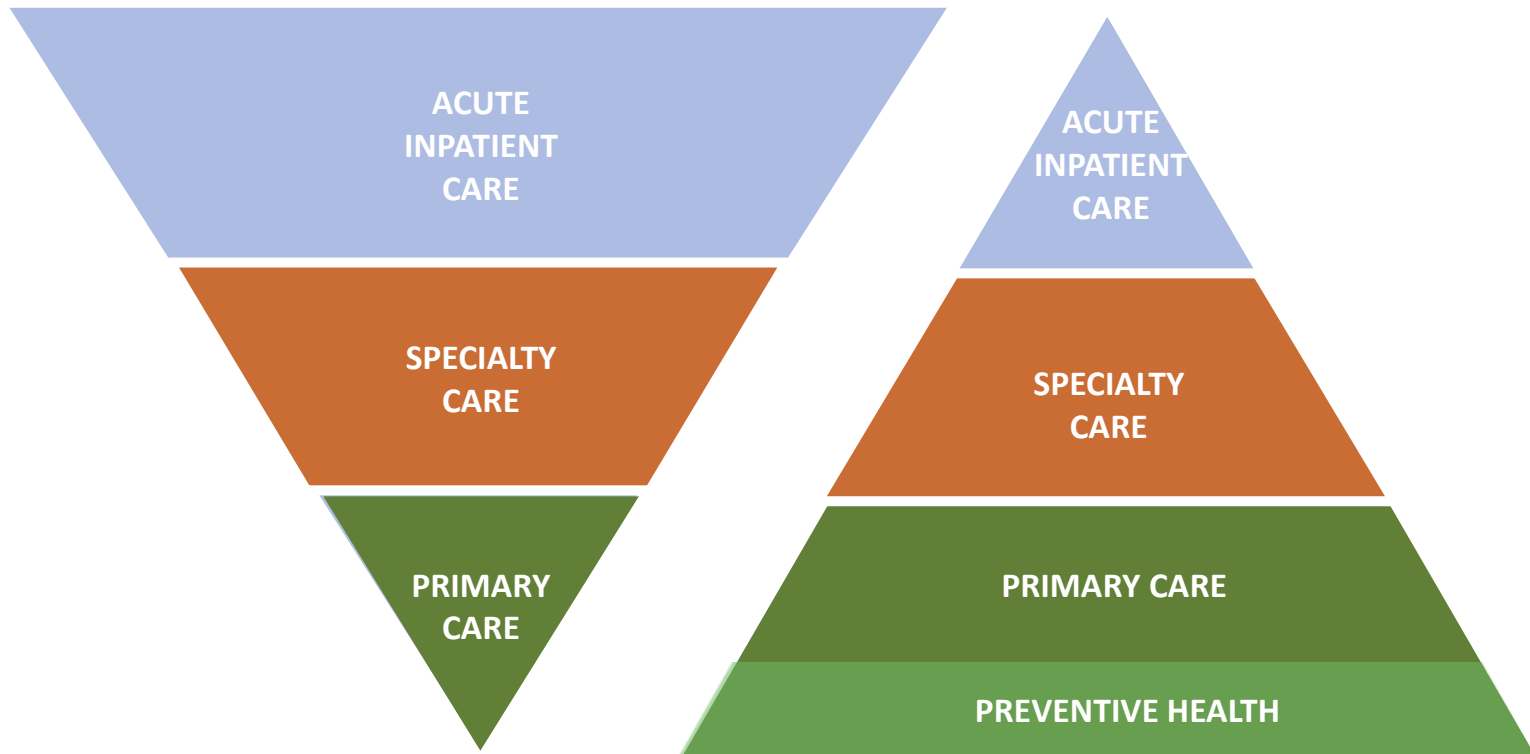


Sandi Agnes, CNP



Samantha Quillen, CNP

TRANSFORMATION OF HEALTH CARE FOR THE FUTURE



FEE-FOR-SERVICE MODEL

VALUE-BASED MODEL

MODEL FOR CARE

Initial Health
Screening
Assessment

Initial Health
Maintenance
Visit

On going
Health
Maintenance
visits

Patient Activation Level

**Health
Improvement
/ Improved
“Consumer”
Behavior**

**Reduced
Medical Costs**

ENHANCING PRIMARY CARE BENEFITS

Invitation / Admission Process

- Union EE's & Spouses
- Flyer attached to ONA contracts
- Enrollment Form and Program Consent
- Identify Primary Care Physician
- Receive Communication from Nurse Navigator
- Schedule the Required Organizing Visit
- Next Benefit Rollout is Aug 1st, then Oct 1st.



NEED MORE INFORMATION?

Excellent Resources Available Under HR Page on U-Connect For This Exciting Benefit:

- Direct Primary Care (DPC) Intro Letter
- Frequently Asked Question (FAQ) documents
- Enrollment Form

QUESTIONS





DEBBY MAYLE- UPS MANAGER

234.801.4525

DCMAYLE@UNIONHOSPITAL.ORG

